

2024 Winners

On this page

Anthea Kerr Award

NSW Public Servant of the Year

Building a resilient economy

Connecting Communities

Driving public sector diversity

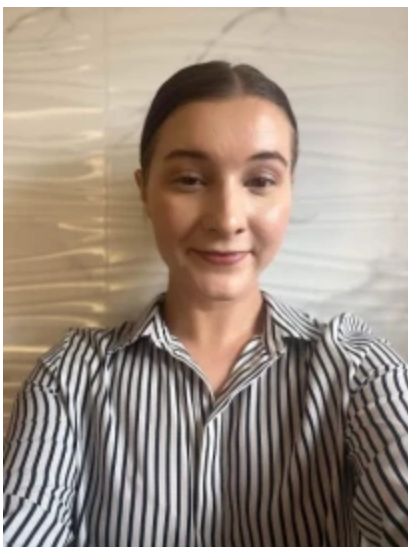
Excellence in service delivery

Highest quality healthcare

World class education and training

Anthea Kerr Award

Samantha Walters



Caseworker, Out of Home Care, Department of Communities and Justice

Samantha is a passionate advocate for young people with disabilities and adolescents facing significant challenges. She works tirelessly for the betterment of children in out of home care, ensuring they have a voice and are seen, heard and respected by the community.

She leads as young person without a management position, is a role model to her peers and is known for going above and beyond for the most vulnerable children of NSW.

Honourable mention: Tara Reynolds

Head Teacher Learning Design & Innovation, James Meehan High School

Tara's leadership has inspired her team to become leaders themselves.



During the COVID-19 pandemic, like many schools, James Meehan High School suffered from low attendance, behavioural problems and disengagement. To address these issues Tara and her team devised a groundbreaking interdisciplinary curriculum, that seamlessly merges diverse disciplines to enhance student engagement and achievement.

Tara's innovative approach not only challenged her team but also inspired them to embrace change and step beyond their comfort zones. The result is a curriculum that not only addresses the immediate issues but also prepares students for the complexities of the modern world.

NSW Public Servant of the Year

Bev Lazarou



Senior Project Officer, Legal Aid NSW

Bev is a highly respected leader in the NSW domestic, family and sexual violence sector, with over 30 years' experience. Bev has provided support, mentoring and guidance to countless frontline staff who assist women experiencing FDV across the state.

She has worked tirelessly to ensure women experiencing violence have access to specialist support when they report or seek help at NSW police stations through the co-location pilot program. Bev works collaboratively across agencies to keep women and their children safe.

Honourable mention: Associate Professor Naomi Hammond

Executive Director of Research, Northern Sydney Local Health District

Naomi has over 11 years of dedicated service as a clinical nurse researcher. She has an impressive record of leading research that has transformed care for critically ill patients.

Pushing the boundaries of critical care research to tackle key issues in patient care, Naomi collaborated on a ground-breaking research program, leading a world-first study on fluid resuscitation practices covering 27 countries. The research findings have transformed practice and improved patient outcomes.



Building a resilient economy

Uptown District Acceleration Program



**Office of the 24-Hour Economy
Commissioner, The Department of
Creative Industries, Tourism, Hospitality
and Sport**

A 2017 study identified \$16 billion in unrecognised economic benefit within the Greater Sydney night-time economy. Unlike other global cities, Sydney's metropolitan area is geographically dispersed.

The Uptown Program empowers local businesses to collaborate with their neighbours to create vibrant going-out districts, promoting and maximising the diverse, multicultural and unique going-out experiences that Greater Sydney has to offer. It leverages the economic potential of new flexible working arrangements, where people are choosing to spend their time and money in their local areas.

Over 20 unique and coordinated districts have been developed across Greater Sydney. These districts reported increases in foot traffic, partnerships and sales.

Partners: Create NSW

Connecting Communities

Digitisation: Records of Stolen Generations

Museums of History NSW



In 2016, the NSW government received 35 recommendations in the Unfinished Business Report into Reparations for the Stolen Generations. In 2020, joint work by Aboriginal Affairs NSW and Museums of History commenced to address recommendation 25 relating to the accessibility and usability of records relating to the Stolen Generations.

Over a period of 19 months, Museums of History created 150 terabytes of digital resources, including 1.2 million digitised images and 358,000

entries describing names and geographical places.

A knowledge bank was created throughout the project to assist interpreting cursive handwriting which included names of board members, managers, welfare officers and other impactful entries.

Partners: Aboriginal Affairs NSW and Department of Communities and Justice

Honourable mention: James Meehan High School - Middle school initiatives



Department of Education

In 2020, James Meehan High School grappled with plummeting enrolment from feeder primary schools. To remedy this, they implemented the James Meehan Cup transition program aimed at smoothing the path from primary to secondary education.

This program included academic competitions, gala days, school visits, and a collaborative approach to address literacy and numeracy gaps. It also showcased the school's facilities and programs to prospective families, students,

and teachers.

Now in its fourth year, the James Meehan Cup has seen a remarkable surge in community involvement, resulting in a 50% increase in the enrolment over the past four years and NAPLAN results reflect the highest growth in a decade.

Partners: Macquarie Fields Community of Schools

Driving public sector diversity

Early Birds & Night Owls

Australian Museum



Families of children with sensory sensitivities were an underserved audience by the Australian Museum. Following a successful pilot program that provided equitable museum access to these families, sensory friendly mornings were expanded to include adults at night.

The program aims to develop and foster self-determination, independence and social connections for those with autism and sensory sensitivities. The Australian Museum is committed to driving change

across NSW, nationally and internationally and have shared their training resources with other museums and galleries.

Excellence in service delivery

Howlong Community Emergency Response Team



NSW Ambulance, NSW Health

With a population of 2,551 the Howlong community is too small to sustain a paramedic station. To ensure the community have access to adequate emergency care the Howlong Community Progress Association worked with NSW Ambulance to establish a Community Emergency Response Team for the area. The response team are a unit of trained volunteers that provide initial clinical care prior to the

arrival of paramedics.

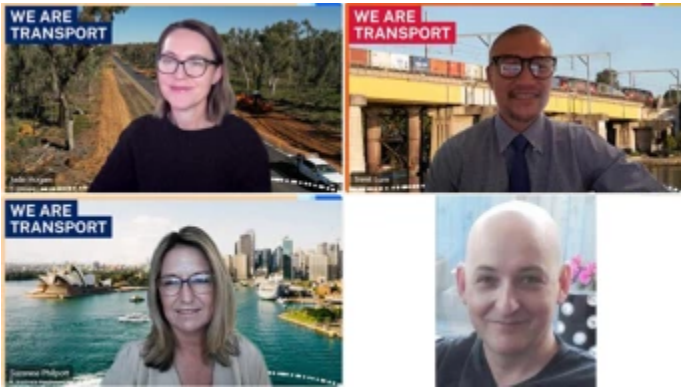
Community members underwent a rigorous assessment process before commencing 9 months of induction training with paramedics. To date the 10 volunteers have responded to 95 Triple Zero (000) calls.

Partners: NSW Ambulance and Howlong Community Progress Association Inc

Honourable mention: The Bowe Kerb

Transport for NSW

Approximately 20% of all fatalities on NSW roads each year are pedestrians and around 1,000 pedestrians are seriously injured. A significant percentage of fatalities and serious injuries occur due to errant vehicles colliding with a kerb, mounting the footpath and striking people or fixed objects.



Installation of redirective kerbs, a safety device used to control errant vehicles, reduces the risk of a vehicle leaving the roadway. The Bowe Kerb effectively and safely redirects errant vehicles at up to 80km/h. Previous designs had limited capacity at 50km/h and did not have capacity to redirect larger, heavier vehicles such as SUVs and utility vehicles.

The Bowe Kerb is the new Australian standard for redirective kerbs, it can be applied to all future

projects and installed across the country.

Highest quality healthcare

RPA Virtual Wound Care Command Centre



Sydney Local Health District, NSW Health

Chronic wounds significantly strain healthcare systems with high readmission rates and costly outpatient services. Disjointed care exacerbates patient suffering and increases healthcare burdens.

The Wound Care Command Centre, within Australia's first virtual hospital, leverages an artificial-intelligence wound app for immediate specialist services. This service dramatically reduces wait times, readmissions and hospital stays, enhances communication, and ensures consistent, high-quality care across geographic boundaries.

World class education and training

Birranry and Mulungan Program

Department of Climate Change, Energy, The Environment and Water

The Birranry and Mulungan Business Program increases a sense of pride in young Indigenous people, provides higher levels of engagement in education, enhances skills for employment and encourages academic qualifications. This unique program uses the combination of an immersive Zoo experience, supportive blame free environment, qualified educators to address and reframe student relationships with education. Participants graduate with pathways to employment or further training, increased engagement with school education and momentum to overcome the patterns of disadvantage.



Partners: NSW Office of Regional Youth and Transport NSW

Honourable mention: Vocational Education and Training in School Program

South Western Sydney Local Health District

Nursing shortages are a critical issue for local communities. This program established and invested in a pipeline program to address predicted shortages by creating health career pathways for high school students. The collaboration between the healthcare and education sectors provides students with vocational skills and practical experience and generates a potential pool of applicants for Assistant in Nursing positions. The program prepares students for nursing roles through hands-on experience, mentorship, and alignment with industry standards in the area where they live and attend school.



Partners: Department of Education and NSW Health Registered Training Organisation